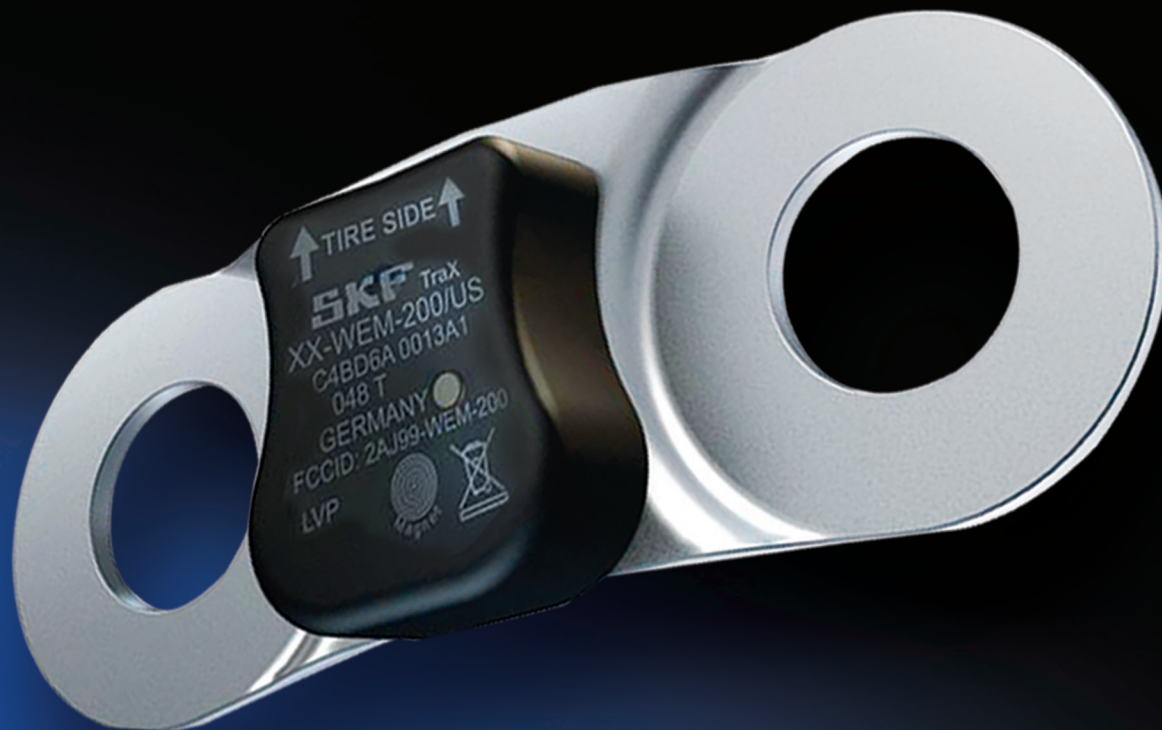


SKF TraX StandAlone Wheel End Monitor

Do you know when your bearings will fail?
TraX wheel end monitoring system does.



- Detects bearing failures well in advance, preventing delayed shipments & expensive “vehicle down” service calls
- Detects extreme heat on the wheel and produces an alert
- Bearings are not replaced until they reach their end of life, saving unnecessary maintenance
- Easy install and no telematics connection required



SKF TraX StandAlone WEM – protection you can see

The SKF TraX StandAlone WEM features a sensor unit that simply bolts onto the wheel to monitor bearing temperature and vibration. There's no need to connect to a vehicle monitoring telematic system – as the chart below shows, the TraX StandAlone WEM indicates bearing condition with a series of blinking LED lights on the unit itself.



Blinking	Frequency		Meaning	Duration
	On time	Off time		
	1s	5s	Wheel end failure detected	14 days (at standstill)
	0.5s	2s	Product internal failure detected	14 days (all the time)
	0.25s/0.25s	4.5s	Temperature alarm	14 days (at standstill)

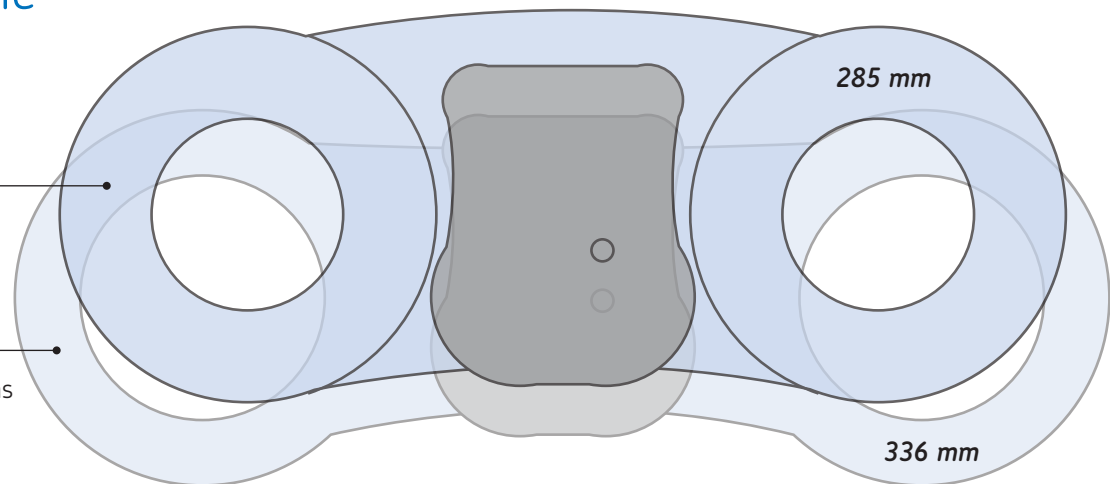
TraX StandAlone WEM models *actual sizes shown*

WEM-200/USSA-1

Sized for US trailers

WEM-200/32SA-1

Sized for buses/EU applications



HAVE A TELEMATICS SYSTEM?

The SKF TraX WEM is also available in models that integrate with any telematic system or service provider – ask your SKF representative for details.

PART NUMBERS:

WEM-200/US

US Trailer models

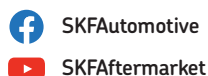
WEM-200/32

Coach Market / Eu applications



Scan the QR code or visit vehicleaftermarket.skf.com to learn about the latest SKF innovative products and access the complete product range.

Follow SKF Aftermarket on social media for helpful technical videos and assembly instructions.



Contact SKF Customer Support to help resolve your automotive problems and answer your questions:

Vaorders@skf.com

(800) 882-0008