

SKF Fully Loaded Trailer Hub Assembly

A unique range of high performance hub units from SKF

SKF Aftermarket Support

Scan the QR code to visit the official SKF Vehicle Aftermarket website
View the latest SKF innovative products, access the complete product range and technical support.



Follow SKF Aftermarket YouTube Channel
View helpful technical videos and assembly instructions on our SKF YouTube channel in a clear and informative way.

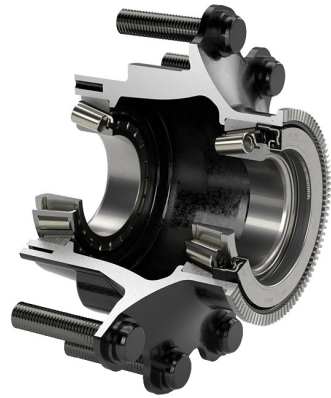


Follow SKF Automotive Social Channels.



Contact SKF Technical Support to help resolve your automotive problems





SKF Engineered

SKF combines cutting-edge heavy-duty wheel end technologies to provide a highly robust and advanced solution that maximizes uptime for your fleet. The assembly incorporates a high-quality ductile iron hub, ensuring precise alignment of bearings, seals, brake drums, and wheel mounting surfaces. Additionally, it incorporates the CR Scotseal X-Treme, equipped with state-of-the-art heat technology, along with SKF bearings.

Huge Uptime = Huge Savings: Save time & money with SKF Fully Loaded Trailer hubs



SKF bearings

- Leading bearing supplier for North American OEM wheel ends
- Low friction and long service life
- Enhanced operational reliability
- Running-in period with reduced temperature peaks

CR Scotseal X-Treme

- PACE award winning design
- HNBRX material providing extreme heat resistance
- Reduced friction for improved rolling efficiency
- Improved fuel economy and lower emissions



Premium Ductile Iron Hub

- Machined in one Operation for perfect Alignment
- Extended tire, seal and bearing life
- Industry-leading lubricant capacity extends bearing and seal life
- No aluminum hub maintenance risks



Applications

Loaded hub part number	Bearings (Inner/Outer)	CR Scotseal X-Treme	Composite cap (Oil / Grease)	Aluminum cap (Oil / Grease)	Stud standout - Inches	Description
TNHUB1	SET413 / SET414	46300XT	1643 / 1343	1843 / 1841	3.72" Dual Alum	Tapered axle-ABS-Aluminum wheels (Long studs)
TNHUB2	SET413 / SET414	46300XT	1643 / 1343	1843 / 1841	2.96" Dual Steel	Tapered axle-ABS-Steel wheels (Short studs)
TPHUB1	SET415 / SET415	42627XT	1696 / 1399	1869 / 1899	3.72" Dual Alum	Parallel axle-ABS-Aluminum wheels (Long studs)
TPHUB2	SET415 / SET415	42627XT	1696 / 1399	1869 / 1899	2.96" Dual Steel	Parallel axle-ABS-Steel wheels (Short studs)



SKF Exploded hub with included retainer